

APOLLO / APOLLO HS



Rollfilm



Ultrafiche



Aperture Card



Base Unit

- 3-in-1 Modular Design
- Outstanding Quality
- Dual Stream Output
- 12-bit Grayscale
- Scalable Solutions
- Fastest ROI
- True DPI

SunRise Imaging has continued to lead the microfilm scanning industry since 1991 with evolutionary new products.

The new SunRise 3-in-1 signature scanners: Apollo and Apollo HS, together with the powerful new dual mode ScanFlo Premier application software takes advantage of the latest scanning, image processing and computing technologies.

SunRise Imaging, Inc.

1813 East Dyer Road, Suite 410
Santa Ana, CA 92705, USA
Tel: +1 .949.252.3003
sales@sunriseimaging.com

SunRise Imaging (EMEA) Ltd.

SBC House, Restmor Way
Wallington, Surrey, UK SM6 7 AH
Tel: +44.208.255.2011
sales@sunriseimaging.co.uk

SunRise Imaging (India) Pvt. Ltd.

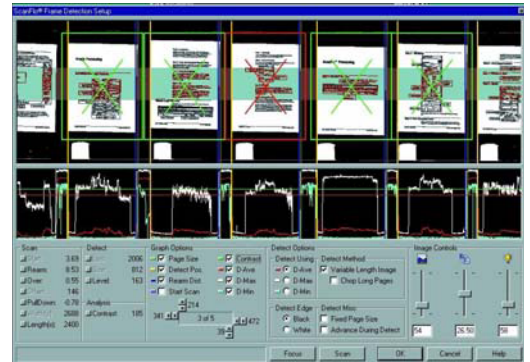
#33, Swiss Complex, GS33
Race Course Road, Bangalore - 560001, India
Tel +91. 80. 2235. 6191
sales@sunriseimaging.co.in



Hardware Specifications

The SunRise 3-in-1 scanner consists of a Base Unit: computer, software, scanner controls, camera & light source. A Rollfilm, Ultrafiche, or an Aperture Card module completes the system for any type of microfilm to be scanned.

FEATURES OF SRI SCANNER	3-IN-1	Apollo	Apollo HS
3-in-1		Yes	Yes
Dual stream		Yes	Yes
True output resolution, not scaled		Yes	Yes
Selectable camera resolution		Yes	Yes
Upgradeable		Yes	Yes
Module interchangeability		Yes	Yes
SOFTWARE			
Operating System: Windows 7 Ultimate Applications		Yes	Yes
ScanFlo Premier		Included	Included
RowScan		Option	Option
ReelScan		Option	Option
Remote access diagnostics		Yes	Yes
COMPUTING SYSTEM			
Processor		Core i5	Core i7
Memory		4 GB	4 GB
Hard drive	SATA 6Gb/s	2 TB	4 TB
Optical drive: Dual layer DVD writer		Yes	Yes
Flash drive connector via USB		Yes	Yes
I/O			
USB 2.0: Front-2, Rear-6 (2 are USB 3.0)		Yes	Yes
Display output: VGA/DVI-D/HDMI		Dual	Dual
Mouse & Keyboard		Yes	Yes
LAN: Gigabit Ethernet		Yes	Yes
IMAGING			
Linear CCD 4080 & 8160 pixel array		Yes	Yes
Camera		Apollo	Apollo HS
Lens: Nikon 60mm f/2.8		Yes	Yes
LED Light Source		Yes	Yes



ScanFlo application makes it easy and fast for you to setup and operate your 3-in-1 scanner

PERFORMANCE					
Rollfilm	16mm, 200dpi, 24X reduction	200	375	images per minute	
Ultrafiche	5 rows x 14 images, 200dpi, 24X reduction				
	(using step scan function)	60	75	images per minute	
	(using RowWise function)	100	150	images per minute	
COM film	15 rows x 18 images, 48 X reduction				
	(using multi RowWise function)	120	210	images per minute	
Aperture Card	26.4" x 15.9", 200dpi, 8-bit grayscale, 24X reduction	600	700	images per hour	

Important Note: Performance is highly dependant upon film characteristics and quality. The above data is based on SRI production test films and is provided for reference only.

ELECTRICAL

Input power	110/220 VAC, 47-63 Hz, 5.0/2.5 Amp (surge protection recommended)
Temperature	OPERATING 10 to 24°C (50-75°F), NON-OPERATING 0-70°C (0-158°F), VARIATION 4°C (40°F)/hour
Relative Humidity	[NON CONDENSING] OPERATING 10% to 90%, NON-OPERATING 5% to 95%
Air flow	OPERATING 1.05-1.4 CMM (37-50 CFM)
Altitude	0-3048 meters (0-10,000 feet)
Safety	FCC Class A, CE ITE Class I

Software Specifications

The new family of SunRise 3-in-1 microfilm scanners now includes many of the capabilities that were options (such as Image Density Compensation, Gamma Correction, Grayscale). In addition, many new capabilities have been developed to provide a higher level of functionality.

Capabilities of ScanFlo Premier

Grayscale scanning	Up to 12 bit pixel depths
Image processing	Bi-tonal & 4, 8, 12 -bit grayscale. Grayscale edge detection, Crop & deskew, Rotation, Segmentation, Blip detection, flip, rotate, invert, edge enhance with 1, 2, 3 pixel radius.
Gamma	Enhance contrast by stretching grayscale
Special features	Rollfilm – option to skip blank pages Ultrafiche – apply five different image processing options on same fiche
Display	Selectable between bi-tonal & grayscale display based on the type of scan
Digitized data stream	Simultaneously bi-tonal and 8 bit grayscale with different naming options
TIFF files	Uncompressed single/multi-page TIFF for bi-tonal
File formats	TIFF, TIFF LZW, JPEG, GIF, PDF, PDF-LZW for bi-tonal and grayscale
Crop & deskew	Crop & save with or without deskewing
Scan settings	Parameter changes are remembered & shown across all windows
User interface	Dual mode: wizard & classic. Powerful UI logically grouped fields, for fast setups
Error reporting	Enhanced error logging & reporting
No Rescan	Real time image processing eliminates the need to rescan to see the changes
Ease of use	Tool Icons, drop down menus, Wheel mouse
Utility	Focus utility to help users choose head height and focus
Help	Context sensitive help, how to use the software including step by step instructions

Microfilm support

Film polarities	Negative/Positive
Reduction	7x – 72x - [Scanner dpi: Half CCD reduction (4K mode) 2,500 - 11,000] [Scanner dpi: Full CCD reduction (8K mode) 4,900 - 23,000] Note: The minimum range can be lower by use of the optional extension tubes
Document size	A0 – A4 (A – E)
Film types	Standard & most non-standard
Compression types	Bi-tonal: TIFF uncompressed, TIFF CCITT G4, Multi page TIFF, PDF, PDF LZW Grayscale: TIFF uncompressed, TIFF LZW, JPEG (8-bit), GIF (8-Bit), PDF, PDF LZW

Mechanical

Dimensions (max)

Base Unit: H 29" (74 cm) x L 30" (76 cm) x W 14" (36 cm)

Base Unit + Ultrafiche: H 29" (74 cm) x L 30" (76 cm) x W 28" (71 cm)

Shipping container - Base Unit: Box 1: 35" (89cm) x 19" (48cm) x 19" (48cm)
Box 2: 35" (89cm) x 19" (48cm) x 14" (36cm)

Weight (max)

Base Unit: Box 1: 40 lbs, Box 2: 45 lbs

Module - Ultrafiche: 37 lbs (47 lbs with shipping container)

Base Unit + Rollfilm: H 29" (74 cm) x L 30" (76 cm) x W 24" (61 cm)

Base Unit + ApertureCard: H 29" (74 cm) x L 30" (76 cm) x W 36" (92 cm)

Shipping container - Module: H 13" (33 cm) x L 34" (86 cm) x W 18" (46 cm)

Module - Rollfilm: 18 lbs (27 lbs with shipping container)

Module - Aperture Card: 27 lbs (37 lbs with shipping container)

(Note: The Base Unit and the modules are shipped in a separate container)

Modules

Rollfilm



Film types:

16mm, 35mm Edge to edge
auto detection variable size
Cine/Comic (Portrait/Landscape),
Simplex/Duplex/Multiplex, COM
Oil Well Logs (Continuous forms)
Blipped

Options: 1000 ft reel attachment;
16mm 3M cartridge adapter

Ultrafiche



Film types:

Standard and jumbo fiche, Jacketed,
Cine/Comic (Portrait/Landscape),
Computer Output Microfilm (COM)
Oil Well Logs, AB Dick, Microx,
Step & repeat fiche

Options: Reflective title bar;
AB Dick locator pins and filter

Aperture Card



Film types:

Cine/Comic
Multiple T-Card (1,2,3... images per card)

Standard:

Hollerith code reader



SunRise Imaging - A global company, with global customers, sales, support & service

